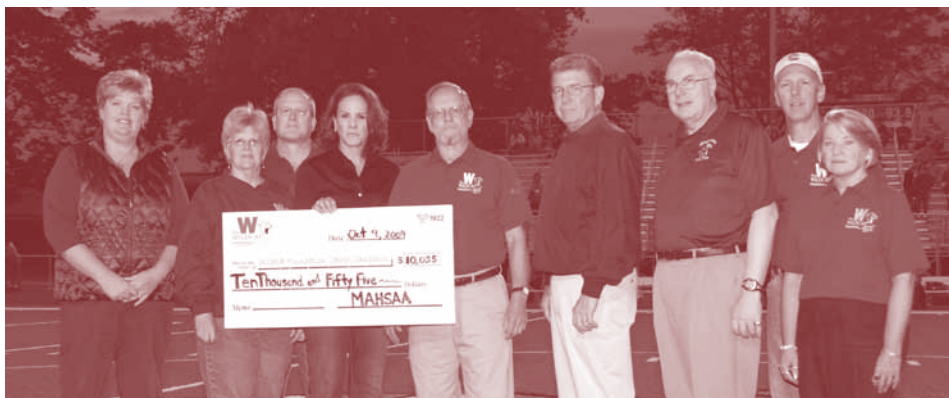


# The Annual WILDCAT ROAR

Don't miss out on the happenings of your alumni association!

## PRESIDENT'S MESSAGE



**Pictured left to right are:** Donna Schankweiler, Carole Bruce, Ercol Acri, Myra Badorf, Ranny Singiser, Ed Miller, Joseph Hood, Gary Weber and Jeanne Souder

### To My Fellow Alumni:

**C**ongratulations to the Class of 2010 and best of luck to all of you. At the Annual Dinner Meeting we will honor the Class of 1960, four inductees into the Hall of Fame and our 2010 Scholarship recipients. Please join us at the West Shore Country Club for a night of memories, food and fun.

For those of you not familiar with Mechanicsburg Area High School Alumni Association (MAHSAA), and for those who could use a refresher, this is who we are. Established in 1883, it operates under by-laws that were updated in 2009 and the Association is a non-profit (501c (3)) organization, which raises funds for scholarships to be awarded to deserving Seniors.

The MAHSAA Scholarship Fund was established in 1980 under the direction of Mabel M. Vogelsong, '25. Initially the Fund began with local solicitations resulting in \$10,000 and has grown to \$513,000 by donations from Mechanicsburg graduates throughout the country. As of December 31, 2009 the market value was \$380,689. The Scholarship Fund is part of the Mechanicsburg Area Foundation and managed by the Foundation for Enhancing Communities, formerly the Greater Harrisburg Foundation. All monies are held in a permanent endowment fund with annual investment income being appropriated for the annual student scholarship awards. In 2010 we will award over \$18,000.

MAHSAA recognizes, by nomination to the "Hall of Fame", Mechanicsburg High School graduates who have met the Hall of Fame guidelines. Categories are: Service to Humanity, Loyalty to Mechanicsburg High School, Outstanding Achievement in Athletics, and Outstanding Achievement in a Chosen Profession.

We hold an annual dinner meeting the third Friday in June. See details in the box to the right and on [www.mashalumni.org](http://www.mashalumni.org). The dinner is open to all Mechanicsburg alumni and their guests. At the annual dinner meeting we award the scholarship winners, honor the 50 year class and induct the Hall of Fame recipients.

Something fairly new is the MAHSAA Annual Homecoming Event, which in 2010 will be held Friday, October 22. This has been a very successful event with over 200 people in attendance. See details on the last page of this newsletter or on the website.

How can we help with your reunion plans? MAHSAA serves as a resource for class reunion committee's planning events. If you are planning a reunion, please contact us as you begin your plans. We will provide a current list of your class members. If you are on your class reunion committee and need a printed class list, mailing labels, or want to place a class reunion announcement on the web site or message board, please email [info@mashalumni.org](mailto:info@mashalumni.org). If you or someone you know are not receiving the annual newsletter, visit our website.

So how can you help? Please support MAHSAA by paying your annual membership dues of \$10.00 and donating to the scholarship and/or administrative fund. Your contributions are greatly appreciated.

Finally, thank you to the Board of Directors for their dedication to this association. A special thanks to Eric Hollinger for serving as our President for the last 3 years.

Sincerely,

**Myra Badorf, '78** President

# 2010

Mechanicsburg Area  
High School Alumni  
Association Newsletter

**MASH ALUMNI  
ASSOCIATION INVITES  
YOU TO ATTEND THE**

## 117th Annual Dinner

Toast your classmates.  
Renew lost friendships.  
Enjoy a great dinner.  
Dance into the evening...

### Friday, June 18th, 2010

**6 pm – Cocktail Hour  
7 pm – Dinner**

West Shore Country Club\*  
100 Brentwater Road  
Camp Hill, PA

## HONORING

**The Class of 1960**

*The Fifty Year Class*

**The Class of 2010**

*Our Newest Members*

*Come and enjoy the fabulous  
WSSC ballroom. Invite your  
friends to join you for dinner.*

*\*Sport coats required for men.*

## TABLE OF CONTENTS

President's Message.....	1
Hall of Fame .....	2-3
Reunion Calendar.....	3
Contributors .....	4-5
Memorials.....	6-7
Honorariums .....	6
MASH Online.....	7
Wildcat Foundation .....	8-9
Scholarship Awards .....	10
Financials.....	10
Reservations/Donations.....	11
Board of Directors.....	12

# HALL OF FAME



## Dr. Terry R. Brown

*Class of 1966*

**SERVICE TO HUMANITY**

Upon graduation from MHS in 1966, Terry pursued his interest in science at the University of Pennsylvania where he received a Bachelor of Science degree in Chemistry in 1970. He then went on to attend Penn State University where in 1976, he earned a PhD in Pharmacology from the Milton S. Hershey School of Medicine. Terry spent the next two years at the Hershey Medical Center, Hershey PA, where he did post-doctoral research in Endocrinology.

In 1978, Terry joined the faculty of Johns Hopkins University School of Medicine as an Assistant Professor in the Department of Pediatrics, Division of Endocrinology. While there he also received a joint appointment in the Department of Biochemistry and Molecular Biology at the Johns Hopkins Bloomberg School of Public Health and he advanced to the rank of full Professor in the Schools of Medicine and Public Health. He also served on numerous departmental and school-wide committees and is currently the President of the Faculty Senate and is Chairperson for the Committee on Academic Standards in the School of Public Health.

His numerous achievements throughout his career are most impressive. Terry has mentored numerous masters and doctoral degree students and postdoctoral fellows in his laboratory over a thirty year career in medical research. His continuous record of research grant support from various federal and private funding sources has enabled him to continue his focused research on the actions of the male hormone, testosterone, as it relates to normal and abnormal sexual development, male reproduction and infertility, and diseases such as prostate cancer.

Along with his trainees and colleagues, Terry has published more than 150 papers, book chapters and review articles in scientific literature. In addition, he and his trainees have given frequent presentations at national and international scientific meetings. He has served on many committees and editorial boards of scientific societies including the Endocrine Society, the American Society of Andrology, the Society for the Study of Reproduction and the Society for Basic Urologic Research. From 2006-2009, Terry served as Vice-President and later President of the American Society of Andrology. As a recognized expert in the areas of endocrinology, prostate cancer and male hormones, Terry is frequently asked to serve on expert scientific review panels for the National Institutes of Health, the Environmental Protection Agency, the United States Antidoping Agency and the Congressionally Directed Medical Research Program in Prostate Cancer. He chaired the most recent endocrinology review panel for the Prostate Cancer Research Program.

Terry is the son of Clifford, (MHS '42) and Louise Brown. He resides in Columbia, MD with his wife, the former Judy House, (MHS '68). They have two grown children, Dr. Aaron Brown, and Tara, an engineer.



## Dr. Robert A. Fought

*Class of 1960*

**ACHIEVEMENT IN A CHOSEN FIELD**

While at MHS, Bob participated in vocal and instrumental organizations, and during his senior year served as president of both the Glee Club and Band. He earned a Bachelor of Science degree in music education from Penn State University and a Master of Music degree from Northwestern University. Bob returned to Penn State for his Doctor of Education degree.

After a brief stint as a member of the music faculty at Evanston Township High School in Illinois, Bob left to teach at Adams State College in Colorado. For three years he served as Assistant Professor of Music and band director before accepting a position as Director of Bands and Associate Professor of Music at Syracuse University. His many musical accomplishments earned him an offer to join the School of Music faculty at the University of Nebraska in 1974.

Bob's potential was quickly recognized by the administration, and after only one year he was promoted to Full Professor and appointed Director of the Cornhusker Marching Band. During his tenure from 1975-1984, the size of the band increased to 280 members and distinguished itself as one of the premier university marching bands in the country. In 1996 Bob was recognized by the John Philip Sousa Foundation in its awarding of the Sudler Trophy to the Cornhusker Marching Band for maintaining "... an exceptionally high quality of innovation and performance over a long period of time." Bob directed the band in performances at most of the major bowl games, at professional football games, and presented clinics and special appearances at high schools in the central states region. In 1984, Bob relinquished his position as director of the Cornhusker Band to become Director of Bands and Chair of the Wind and Percussion area. He conducted the University's premier wind ensemble.

Bob eventually transitioned to higher education administration where he served in several positions until his retirement from the University in August, 2009. Over the span of his career, Bob appeared at many events as guest conductor, clinician, adjudicator, soloist and consultant. He wrote original musical arrangements of the Nebraska school songs for the Band's pre-game show which are still performed today.

Among his many achievements, Bob is the recipient of the Distinguished Alumni Award from the College of Arts and Architecture at the Pennsylvania State University, the Distinguished Service Award from the Nebraska Music Educators Association, and the Recognition Award for Significant Contributions to Students from the University of Nebraska - Lincoln. He is Past-president of the Nebraska Bandmasters Association and a member of Hixson-Lied College of Fine and Performing Arts Capital Campaign Advisory Board.

Bob resides in Lincoln, Nebraska with his wife, Elizabeth. They have a daughter, Catherine and a son, Gregory.



## Dr. Patricia O'Handley

*Class of 1958*

**ACHIEVEMENT IN A CHOSEN PROFESSION**

After high school, Pat earned a degree from Penn State in zoology and entomology. She entered the University of Pennsylvania's School of Veterinary Medicine in 1962, and after graduation, she moved to California and practiced small animal medicine for five years.

Pat and her husband moved to Michigan and joined the faculty of Michigan State University's College of Veterinary Medicine, serving from 1972 to 2002. While her main responsibilities were the diagnosis and treatment of diseases found in small animals, she concurrently taught veterinary students who were in their senior year. Over time, Pat developed an expertise in the diseases of exotic and unusual pet animals such as mice and snakes, often speaking on these topics at veterinary meetings. She was frequently consulted about dogs' behavioral problems, a new issue for veterinarians in the 1970's and 1980's. She earned a national reputation for her expertise, and in 1987 when the topic of Pit Bull ownership was under discussion, Pat spoke on several radio shows around the country. Her veterinary students always appreciated Pat's practical knowledge of clinical medicine. As a result, in 1985 they selected her to receive the annual prestigious Norden Distinguished Teacher Award.

Pat constantly worked hard to raise standards in her field, serving twice on the MSU admissions committee as chairperson. In 1996, she was appointed by the Governor of Michigan to the Board of Veterinary Medicine and remained in that capacity until 2008. During her tenure on the Board, she was successful in getting equine dentistry recognized as a medical procedure that must be performed under the supervision of a licensed veterinarian. In addition to issuing licenses to professionals, the Board is responsible for protecting the public. In this role, Pat reviewed allegations against veterinarians and oversaw the work of the investigative and disciplinary committees.

As chairperson of the Board of Veterinary Medicine, Pat worked with the Michigan Veterinary Medical Association to establish continuing education requirements. Completing her term on the Board in 2008, Pat's efforts are about to pay off with the pending implementation of these requirements into law. The Michigan veterinary profession recognized Dr. O'Handley in 2005 by presenting her with the W. Kenneth McKersie Service Award conferred on a member for cumulative service and accomplishments benefiting the profession, community and Association.

Pat remains an active member of her profession by serving on the Board of Health Professionals Recovery Program and by being faculty advisor to the Pet Loss Support program. In addition, Pat is or has been very active in various neighborhood and civic programs.

Dr. O'Handley is married to Dr. Ed Robinson, and they live in East Lansing, Michigan. They have two children, Emily a veterinarian, and Sarah an urban planner in Chicago. Pat and Ed have two grandchildren with another on the way.

# REUNION CALENDAR



## Jack E. Quigley

Class of 1955

**ATHLETIC ACHIEVEMENT**

As an athlete at MHS, Jack Quigley played guard on the football team and was a pitcher/infielder on the baseball team. He earned four varsity letters in baseball during the school years of 1951-1955, and by doing so joined an elite group of baseball athletes who enjoyed the same accomplishment.

From 1956-1959, Jack played minor league professional baseball for both the Philadelphia Phillies and the Cincinnati Reds. During the off season, he was employed by Automotive Supply Company.

Jack enlisted in the U.S. Army in 1959. He was stationed at Fort Eustis, VA until 1961, and in November, 1960 he was chosen Soldier of the Month. From 1961-1968, Jack served with the Pennsylvania National Guard as a transportation specialist and was honorably discharged with the rank of sergeant.

In 1962, Jack joined the sales and management team of Bearings, Inc., for which he managed locations in Harrisburg, York, Hagerstown, Baltimore, and Greencastle before retiring in 1998. Bearings, Inc. selected Jack "Manager of the Year" in 1991.

Jack was very actively engaged in coaching young people for many years in both baseball and midget football. He coached football from 1962 to 1991 for Mechanicsburg, Cumberland Valley, Wormleysburg, Greencastle and Baltimore. As a head coach, he led his teams to 18 undefeated seasons and 64 consecutive wins. When he retired from football in 1991, he had compiled a record of 146 wins, 9 losses, and 3 ties.

From 1964 to 1990, Jack coached Little League, Pony League, and Junior Legion baseball winning over 85% of the games. He coached in Hampden Township, Silver Spring Township, and Greencastle. Jack came out of retirement in 2004 to help coach his grandson's Little League team in Williamsport, MD. The team won the league championship with a 14-1 record. Jim Bard, who was the President of Franklin County Sports Officials at the time, stated that Jack was the finest youth coach with whom he was ever associated.

Jack passed away in 2009 but his wife, Ethel, still resides in Greencastle, PA. They have two sons, Dr. Brian Quigley of Raleigh, NC, and Brad of Greencastle, PA.

FOR HALL OF FAME  
GUIDELINES, SEE PAGE 5.

### CLASS OF 1940

Jean L. Keefer  
717-766-3550

### CLASS OF 1944

Friday, June 18, 2010  
**Hoss's** – 61 Gettysburg Pike  
Grace Witmer Durnin  
717-249-3391

### CLASS OF 1945

No Information

### CLASS OF 1947

Saturday,  
September 11, 2010  
**Hoss's** – 61 Gettysburg Pike  
Paul Rupp  
717-737-9956

### CLASS OF 1949

Saturday, October 9, 2010  
**Hoss's** – 61 Gettysburg Pike  
Lois Hensel Wagner  
717-766-5404  
iblittlelo@verizon.net

### CLASS OF 1950

Saturday, August 14, 2010  
**Hoss's** – 61 Gettysburg Pike  
Dave Coover  
717-766-4570

### CLASS OF 1955

Saturday, June 19, 2010  
**Jo-Jo's Pizza** – Upstairs  
Linda Mohler Humes  
717-691-7555  
lindamhumes@aol.com

### CLASS OF 1960

Friday, June 18, 2010  
**Alumni Association Dinner**  
Honoring the  
50 Year Class – 1960!  
West Shore Country Club

Saturday, June 19, 2010  
Allenberry  
JoAnn & Creedin Paulus  
717-432-3916  
jc paulus@pa.net

### CLASS OF 1965

Saturday, August 28, 2010  
Mechanicsburg  
Club Picnic Grounds  
Don Cook  
wizeow148@verizon.net

### CLASS OF 1970

No Information

### CLASS OF 1975

October 2010  
Sheree Cupp Mann  
717-766-8898  
shereemann@earthlink.net

### CLASS OF 1980

Friday, October 22, 2010  
**Golf Outing @ Range End**  
**OPEN TO ALL MASH GRADS!**  
John Boswell  
john@paappraisers.com

**Homecoming Football Game**  
Grandpa's Growler post-game

Saturday, October 23, 2010  
**West Shore Elks, Mechanicsburg**  
Holly Rynard Metzgar  
717-607-4808  
hmetzgar@aol.com

### CLASS OF 1985

Saturday, October 23, 2010  
**Holiday Inn, Mechanicsburg**  
Lisa Hershey Webster  
webrock12@verizon.net

### CLASS OF 1990

Saturday, October 23, 2010  
**C. Ted Lick Wildwood**  
**Conference Center**  
One HACC Drive,  
Entrance 4, Harrisburg  
Carolyn Kuntz Merrill  
cmerrill@hershey.k12.pa.us

### CLASS OF 1995

Ben Basom  
benbasom@hotmail.com

### CLASS OF 2000

Saturday,  
November 27, 2010  
**Duke's Bar & Grille Riverside**  
313 S. Front Street,  
Wormleysburg  
Jason Fickes  
jafickes2000@yahoo.com

### CLASS OF 2005

Christine Van Kirk  
717-265-5244  
christinemvankirk@gmail.com

Please note...contributions are listed for January 1 – December 31, 2009

Any contribution received after December 31, 2009 will be listed in next year's newsletter.



Class of 1940  
Class of 1941  
Class of 1942  
Class of 1947  
Class of 1949  
Class of 1951  
Class of 1954  
Class of 1959  
Class of 1964  
Douglas J. Bender  
Beth Bierbower  
Carole Bruce  
Patricia M. Dunkleberger  
Crystal Fry Hoel  
John L. Martin  
Charles E. Shields

'28 Marian Jacoby Fortney

'32 Rachel Blessley Snavely

'34 Mary Elizabeth Rupp Shade  
J. Harold Widder

'35 Althea Gilbert Steinger

'36 Anne Cocklin Mower  
A. Glenn Mower

'37 George N. Eppley  
Jean May Crumlich

'38 Isabel Coble Kilmore  
Robert W. Kraly  
Paul A. Miller

'39 Betty P. Baker Hollinger  
Winifred Dougherty Swick  
Adele Emery Hartzell  
William E. Hendrian  
Helen Konhaus Rowland  
Nancy Segar Patterson  
Genevieve Stansfield Shenk  
Jeanne Strock Kreiser  
Edward J. Vogelsong  
Virginia Walters McMurtray  
Eleanor Zimmerman Horn

'40 Helen Jane Albright Miller  
Jean A. Armstrong Ritter

Clarence Burley  
Betty R. Goodhart Sowers  
John S. Hollinger  
Kathleen G. Hoover Clason  
Ada Mae Hosler Kuhn  
Jean L. Keefer  
Ellen M. Robinson  
Betty Walters Hendrian  
Kathryn Widder Fishel  
Vance D. Zook

'41 C. Ray Martin  
Donald M. Morton  
Phyllis Wilson Weber  
Alice Zimmerman Creager

'42 Ruth Basehore Lindner  
Clifford R. Brown  
Helen V. Eckert Biddle  
Robert W. Engle  
Marian Fish Logan  
Doris Johnson Lightner  
Evan G. Lindner  
Velma M. McCurdy Mumper  
Ruth C. Schwalm  
Wayne F. Schweitzer  
J. Robert Stauffer  
Bernard J. Williams

'43 Genevieve M. Becker Schrader  
Charles A. Bollinger  
Betty B. Boyce Nailor  
Walter S. Bucher  
George Wayne Cockley  
Roy N. Cramer  
Josephine Dougherty Keiser  
Norma Foster Weber  
Betsy Heagy Smith Murray  
Peggy Lutz Selders  
Edwin S. Nailor  
Elmer Lee Ritter  
Vera Shaull Fittner  
Jacob C. Sheely  
Paul E. Stambaugh  
Doris L. White Zimmerman  
Frank B. Williams

'44 Lois Arbegast Schweitzer  
Cynthia A. Baker McAdow  
Ernestine Berry Fetrow

Delvin E. Forry  
Sam M. Highberger  
Gene W. Hollinger  
Richard S. Keet  
Charles H. Lindburg  
James M. Loscher  
Kathryn Newcomer Ramsey  
Betty Staver Rupp  
Lorena Trimmer Burrell  
Forrest A. Trumbore  
Marjorie Walter Sinclair  
Grace Witmer Durnin

'45 Margaret E. Eckert Cook  
Uzal W. (Mike) Ent  
Richard R. Gray  
W. Donovan Guyer  
Annie F. Holloway Fry  
Betty M. Lightner Stephenson  
Lois M. Meloy Loscher  
Wayne C. Selders  
Althea L. Weber Kessler  
Dorothy M. Wert Wilson  
Ruth A. Wertz Eppley  
Dorothy Westfall Hollinger

'46 Jean M. Barbour Bruce  
Foster M. Berkheimer  
George W. Black  
Robert E. Brandt  
Edwin P. Fanus  
C. Melvin Fertenbaugh  
Marjorie A. Mannix Strasbaugh  
Maxine Pease Rhoads  
Florence Sheely Martin  
Miriam C. Shellehamer Wise  
Sally Sykes Williams  
Orville M. Wise

'47 Larry L. Beaston  
Donald E. Boose  
Ada Joan Brubaker Ent  
Louise Carbaugh VanDinter  
Lloyd D. Coover  
Anna L. Dennis Jacobs  
Donald E. Hershman  
Gladys Hoy Peck  
Constance Kynett Rutsch  
Donald M. Matthews  
Mary Alice Mumma  
Robert E. Reynolds  
Genevieve Ritter Bromley  
Paul J. Rupp  
Shallimar L. Sholley Beshore  
Mary Sloop Rupp  
Theodore R. Trimmer  
Frederick A. Umholtz  
Reily Eugene Ulrich  
Keith A. Waggoner  
Lorraine Weaver Borst

'48 Marian Anderson DeWalt  
Virginia Badorf Keet  
Betty Basehore Hess  
Fred E. Basehore  
Dorris M. Bricker Gerber  
E. June Conrad Hess  
Creedin C. Cornman  
John W. Ent  
Yvonne Gill Morrison  
Laverla Hurlley Yeager  
Irene M. Kraft Neff-Barnhart

Florence A. MacGregor Sultzaberger  
R. Wayne Miller  
Reba Nailor McDonald  
Paul E. Robinson  
J. Edward Ruth  
Harold E. Sheely  
Phyllis Shuler Shaffer  
Dolores M. Smith Sheely  
Claude M. Williams

'49 Lois J. Eagler Fanus  
Richard J. Eberly  
Patricia Frysinger Boose  
M. Annan Gable Seifert  
Ruth E. Gelsinger Wolf  
Lois J. Hensel Wagner  
Helen Hershman Arnold  
Donna M. Martin Donohue  
Shirley E. McCurdy Vogelsong  
John E. Miller  
Harvey C. Shellehamer  
Paul E. Shellehamer  
Verle E. Witmer

'50 Charles S. Alexander  
Donald E. Badorf  
William N. Billett  
David B. Coover  
Donald L. Cornman  
Ruth H. Fogle Ranieli  
Peggy Gill Hofer  
Mary Hartman Fertenbaugh  
Douglas G. Hoskins  
Ray E. (Skip) Hutter  
Jack E. Jordan  
William D. Kile  
Betty K. Klinger Hooven  
Scott M. Koser  
I. Michael Kost  
Gordon C. Martin  
Beverly J. Neff Orris  
Frederick L. Orris  
Barbara A. Rodenhiser Bell  
Helena Wilson Jones

'51 Dolores Y. Hupper Berkheimer  
Joyce Kegel Hoskins  
Josephine Lichty Clay  
Janet Little Wise  
Patricia L. McGonigal Goldhart  
Ralph W. Miller  
Paul E. Nesmith  
Roberta A. Putt Traynor  
Joanne Rider Smith  
June L. Rife Badorf  
Jean A. Smeigh Adams  
Patricia A. Snelbaker Emel  
Charlotte (Jackie) Spry Quatrini  
Samuel J. Stone  
William H. Trayer  
Sara Wagner Flagg  
Dolores E. Weaver Stout  
Robert C. Wise  
George C. Wolfe

'52 Betty Badorf Warren  
J. Elwood Brandt  
Donald L. Cassel  
Sara Ann Early Noss  
Ronald G. Enck  
Margaret H. Heath Nance  
Ralph O. Mumma

Archie A. Noss  
Helen A. Noss Waggoner  
Anne Parsell Shughart  
Arthur L. Sowers  
Ann Stone McClelland  
Robert A. Warren

'53 Edward J. Ardis  
Don A. Bair  
Rita Beaston Kramer  
Winifred J. Bender  
Norma D. Hammaker Shellehamer  
John E. Heath  
William F. Mumma  
Mary Pat Neill Wentzel  
Nancy L. Norris Branyan  
Charles R. (Ike) Reeder  
Nancy C. Roth Hanlon  
Marlene L. Sadler Weigle  
Joanne L. Simons Weiss  
Hannah E. Stone Nesmith  
F. Thomas Ulrich  
June M. Ward Nedrow  
Nancy A. Wentzel Cornman  
Shirley Wilbur D'Orazio  
John P. Wolfe  
Ned Woolford  
Bradley B. Wright  
Janet Zimmerman Wolfe

'54 Irvin Alexander  
Patricia Bahn Hutter  
Ann R. Bair Olberg  
Arlene J. Baker Heintzelman  
Mark R. Basehore  
Sandra K. Becker Coover  
Lloyd W. Bucher  
Cynthia Byers Hartman  
James W. Dougherty  
Ralph E. Eckert  
Fred J. Eichelberger  
Robert E. Enck  
Joan M. Failor Alexander  
Betty H. Heiges Weaver  
David L. Nickel  
Richard C. Rhoads  
Jack C. Ritter  
Darlene J. Sadler Stansfield  
Robert L. Stansfield  
Lois S. Starr Eckert  
Miriam R. Stone  
Marlin R. Weaver  
Gerald B. Wood  
Shirley Zeigler Basehore

'55 William E. Bitner  
Walter C. Daniels  
David H. Diehl  
Charles W. Gelsinger  
Clarence J. Golden  
J. Harold E. Imler  
Marlene C. Jumper Bricker  
Patricia Kelly Sanders  
Linda Mohler Humes  
Donald L. Mowery  
Martin L. Myers  
Sue Parsell  
Cynthia Raudabaugh Stone  
Shirley Reynolds Fake  
Lucy Sheaffer Bair  
Thomas J. Simpson  
Lee C. Stare

Ken C. Strong  
Eva M. Wagner Hair  
James G. Weber  
Lester E. Weber  
Virginia Weber Gelsinger  
Alice L. Williams Ardis  
Donald M. Woolford

'56 Victoria L. Bierbower Shuman  
Barbara L. Bottomlee Hoffman  
Donna Cohick Noss  
Martin L. Coover  
Earl E. Kohlhaas  
Lloyd R. Kramer  
Joyce E. Nailor Bucher  
Wayne E. Noss  
Nancy Shafran Wingert  
H. Ann Shelley Whitcomb  
Sara E. Starr Bardell

'57 Richard E. Bates  
Shirley Brechbiel Paull  
Eleanor G. Carmany Burkhardt  
Donald M. Darr  
Walter H. Fake  
Carrol G. Gill Wrightstone  
Marilyn Horn Kachelries  
Donald C. Humes  
Joan Johnson Stokes  
Ronald J. Knisley  
Marjorie Kreitzer Rutter  
Eleanor J. Nailor Eichelberger  
Phoebe Ann Neiswenter  
Mollie Ritter Randolph  
Matthew M. Shelley

'58 W. Craig Bitner  
Kay Bushey Ashby  
Janet Louise Davies  
Andrea L. Dean Singiser  
Diane Deitrich Voris  
Ira S. Eberly, III  
Donald L. Heiges  
Barbara Kay Lancaster Heiges  
Richard E. Mowery  
Lois E. Neibert Witmer  
Mary Noss Lantzy  
Patricia O'Handley Robinson  
Marilyn Pyke Adams  
William I. Reynolds  
Beverly Roth Warren  
Ranny L. Singiser  
Charles R. Slaybaugh  
John P. (Jack) Voris

'59 Darlee A. Barr Jones  
Eleanor J. Basehore Weber  
Robert (Jerry) Bierbower  
Patricia A. Bixler Myers  
Thomas E. Blocher  
C. Richard Brandt  
Linda J. Breese Brian  
Patsy A. Failor Hertzler  
Ronald G. Folks  
Robert E. Fry  
Robert W. Gardner  
Glenda G. Geegee  
R. Jay Haas  
Paul E. Haines  
Dawson E. Heck  
Patricia Hershner Eberly  
Robert B. Hollinger

## HALL OF FAME GUIDELINES

### Award for Service to Humanity

### Award for Loyalty to Mechanicsburg High School

### Award for Outstanding Achievement in Athletics

### Award for Outstanding Achievement in a Chosen Profession

- Selections limited to four per year, no more than two in any one category.
- Nominee for Outstanding Achievement in Athletics must have graduated at least ten years prior to selection.
- Once a person is inducted into the Hall of Fame, he/she will not be considered for a future inclusion in another category.
- Nominee for Outstanding Achievement in Loyalty to Mechanicsburg High School must have graduated at least fifteen years prior to selection.
- Individual may not nominate himself.
- Candidates not selected in the year of nomination will be considered in future years.
- Nominee for Outstanding Achievement in a Chosen Profession or for Service to Humanity must have graduated twenty years prior to nomination.
- Nominations must be submitted by 12/31/10 prior to Annual Meeting.
- **Nomination MUST include substantive background information and photo.** Submitting alumni should include his or her name, address and phone number.

### SEND NOMINATIONS TO:

Cynthia I. Alleman, HALL OF FAME CHAIRMAN  
1019 Jenkins Grove, Enola, PA 17025

NOMINATION DEADLINE: 12.31.10

Carolyn Hooven Irish  
H. Scott Kane  
James E. Kurtz  
Anna L. Lutz  
Robert A. Lutz  
Donald L. Meck  
Sally Miller Paterson  
Joanne M. Moser Hanna  
William B. Neff  
Carol E. Niesley Rohrer  
Robert L. Norris  
William F. Olberg  
Richard L. Rohrer  
Rebecca Ross Yost  
Gayle Runkle Blocher  
Samuel M. Rupp  
Donna Sechrist Bechtel  
Sandra Snelbaker Rynard  
Richard E. Wagner

'60 Edward S. Armstrong  
Linda Bowman Penny  
Donna Dentler Kipp  
Sarah Drury Cotton  
Deborah M. Gunderman Sweger  
J. Lynn Haas  
Harold V. Hertzler  
Gary L. Hunter  
Carol Kapp Rider  
Richard W. Kipp  
Suzanne Miller Keener  
Kenneth R. Neff  
Creedin S. Paulus  
Donald O. Rankin  
Jo Ann Rider Paulus  
James W. Sauve

'61 Barry L. Adams  
David B. Adams  
Janice D. Anderson Bates  
Stanley E. Derr  
Barbara L. Harne Lowe  
Grace D. Heck Brannan  
Linda M. Martin Verharst  
Gerald P. Minnich  
Michael L. Norris  
Brenda J. Owen Goddard  
Lynn S. Paxton  
Stephen J. Ross  
Gail A. Stiffler Parthree

'62 Cynthia I. Alleman  
W. Michael Bierbower  
Roberta A. Greenawalt Bierbower  
Ann Kerney Kratz  
Carol Kertiss Haley  
Marjorie L. Nace Gurba  
Patricia K. Orris Robertson  
Judith A. Trimble Sauve

'63 Donna Aulthouse Graham  
Martha R. Bates Miraglia  
John B. Carmany  
Robert D. Cook  
Barbara Gelwicks Neff  
Nancy L. Kapp Alleman  
David K. Kurtz  
Jo Ann Messersmith Mitchell  
Marilyn Miller Ginsburg  
Lavina Starner Wagner  
Rickie J. Stone Cook

'64 Fay K. Geegee  
Rose Ann Kimmel Whitesell  
Marsha B. Morgret Fetterolf  
Jerry L. Nailor  
Jonathan R. Page  
Lowell M. Paul  
Tania Ramalho  
Jacob R. Ruth  
Curtis W. Seiler

'65 Ward A. Bower  
Donna J. Carson Nailor  
Judy K. Dull Balthaser  
Beverly A. Heck Miller  
Stephen C. Mefferd  
Carolynn Reppert Sears  
Mary Anne Thomas Hoffman  
Jennifer H. Wear

'66 Marcia E. Brown Campbell  
Marjorie Burlison Seiler  
Morris D. Campbell  
Kenneth L. Hammaker  
Harold E. (Ed) Miller  
Deborah M. Mumper Murray  
Barbara Otto Monighan  
Sandra K. Stansfield Graeff  
Benjamin H. Youell

'67 Diane Deily Wert  
Jane E. Eagle Diller  
David R. Griswold  
Kelley Hanlon Griswold  
Paul A. Meck  
George L. Vogelsong  
Gary B. Weber

'68 Patricia Eberhart Vogelsong  
Marjorie L. Reppert  
Elizabeth Robinson Unger  
Mary Thomas Myers

'69 Brenda J. Danner Cavallini  
Debra Ann Dixon Norcini  
Virginia A. Hollister Herring  
Harry B. Mensch  
Thomas B. Mumper  
Donna J. Shanabrook McCreary  
Steven B. Zimmerman

'70 Stephen P. Fish  
Pamela Fishel Van Kirk  
Howard R. (Mike) Greenawalt  
Deborah S. Neff Hall  
Candace L. Ritter  
Nancy J. Sourbier Todt

'71 Sara S. Hall Snyder  
Eric L. Hollinger  
Kathi Kurtz Ziegler  
Nancy J. Reppert  
James Van Kirk

'72 Roy (Tony) Brown  
Laurie K. Capp Miller  
Thomas E. Glumac  
W. Michael Nailor  
Roberta N. Noble deGrandis

'73 Rebecca J. Forry  
Stephen L. Nailor  
Laurie S. Stansfield Greenawalt

'74 James D. Cotterman  
Michael Paul Miller  
Mary Beth Zeigler

'75 John M. Britcher  
Ronald E. Griffith  
Cheryl Hutter Griffith  
Karolynne A. Neff Alfera  
Rick D. Rishel  
M. Annan Seifert Hollinger

'76 Farley S. Baker  
Alan T. Vandrew

'77 John P. Wolfe

'78 Nancy Appel Scott  
John W. Appleby  
Myra S. Badorf  
Peter J. Ciarocca  
E. Randall Kinsey  
Barbara Lolus Appleby  
Tracey L. Rice Mitchell  
Kierna Seifert Black  
Andrea J. Turo Teeter  
Margaret Waardenburg Wolfe  
Mary Anne Wise Parrett  
Michael J. Wolf

'79 Anna L. Baldini  
Carmen D'Agostino  
Jane E. Dudzinski Michaliszyn  
Wendy S. Eberly  
Lisa R. Patterson Wolf  
Mark W. Podvia  
Karen Singiser Vandrew

'80 John S. Boswell  
A. Benjamin Calhoun  
Joseph M. Farace  
Mark H. Hertzler  
Bradley E. Lolus  
Thomas E. Pearl  
Susanna Reppert Brill  
Bradley S. Warren

'81 Kelly S. Calvert Gustufson  
Stephen A. Orner  
Holly J. Rider Laufer  
Jeffrey G. Shatzer  
David C. Wise

'82 Karen Hertzler  
Kurt J. Willett

'83 Glen M. Bootay  
Ann D. Dennison  
Timothy S. Gallagher  
Richard M. Gurba  
Betsy Neidel Layton  
Janice Waardenburg Shatzer

'84 Michelle Bierbower  
Russell E. Daniels  
Ilka S. Eberly  
Suzanne Sawyer Masterson  
Michael S. Signor

'85 Sherri L. Akens Albertson  
Douglas L. Stevick  
Jeffrey T. Teeter

'86 Robert J. Mentzer  
Brett A. Warren  
Dona K. White Norris  
Michelle M. Zook Serff

'87 Debra S. Bates Schrott  
Traci A. Morret Pellegrini  
Jeffrey L. Ruth  
John L. Sullivan

'88 Matthew D. Culbertson  
Katharine Humes Query  
Jill A. Neibert Garnhart  
Eric T. Query

'89 Michelle L. Coover Sullivan  
Christina Grove Mizelle  
Stephanie E. Stremmel Ruth

'90 Jessica L. Brillhart  
Ingrid S. Eberly  
Samuel D. Rupp  
Ryan E. Sandridge

'91 Jennifer E. Blust Santarelli  
Brian Jamiolkowski  
Amy S. Montwicki

'92 Justin W. Brillhart  
Trisha L. Neibert Reed  
Keith A. Quinlan

'93 Mimi L. Coover Culbertson

'94 Michele L. Seifert Kreitman

'95 Benjamin D. Basom

'96 Ilene S. Eberly  
Megan E. Thomas Quinlan

'97 Ryan S. Luckenbaugh  
Michelle L. Wallander

'98 Erin L. Cochran Crispin

'01 Janelle L. Luckenbaugh  
Julie A. Palakovich Carr

'03 Adam M. Weber

'04 Alanna L. Justice  
Austin W. Wolfe

'05 Madeline R. Michaliszyn  
Christine M. Van Kirk

'06 Amy M. Weber

'07 Jennifer Naus  
John Paul Wolfe III

'09 Amy J. Bruce  
Camilla Keenan-Koch  
Noah M. Michaliszyn

## MECHANICSBURG ALUMNI MEMORIALS



**Class of 1938**  
Paul A. Miller '38

**Class of 1941**  
Class of 1941

**Class of 1942**  
Class of 1942  
Clifford R. Brown '42  
Velma M. McCurdy Mumper '42

**Class of 1943**  
Jacob C. Sheely '43

**Class of 1948**  
Claude M. Williams '48

**Class of 1949**  
Class of 1949  
Lois J. Hensel Wagner '49

**Class of 1950**  
Barbara A. Rodenhiser Bell '50

**Class of 1951**  
Class of 1951

**Class of 1952**  
Ronald G. Enck '52

**Class of 1954**  
Class of 1954

**Class of 1960**  
Gary L. Hunter '60

**29 US Military Servicemen  
from Class of 1963**  
David K. Kurtz '63

**Neiswenter, Wayne (Faculty)**  
Phoebe Ann Neiswenter '57

**Neiswenter, Janet (Nurse)**  
Phoebe Ann Neiswenter '57

**Busler, Karl M. '15**  
Marjorie A. Mannix  
Strasbaugh '46

**Boffemmyer Parsell-  
Stram, Betty '25**  
Anne Parsell Shughart '52  
Sue Parsell '55

**Brandt, M.D., Dr. C. Richard '25**  
C. Richard Brandt '59

**Ritter, William R. '26**  
Mollie Ritter Randolph '57

**Eberly, II, Ira S. '27**  
Ira S. Eberly, III '58

**Bitner, Jr., William E. '28**  
W. Craig Bitner '58

**Fortney, Boyd M. '28**  
Marian Jacoby Fortney '28

**Myers Weber, Catharine '28**  
James G. Weber '55

**Reynolds, Mervin S. '28**  
Robert E. Reynolds '47  
William I. Reynolds '58

**Koser, Sr., Scott M. '29**  
Scott M. Koser '50

**Gelwicks, Russell E. '31**  
Barbara Gelwicks Neff '63  
William B. Neff '59

**Guyer Breese, Jean '31**  
Linda J. Breese Brian '59

**Hershner, Newton W. '33**  
Patricia (Tita) Hershner  
Eberly '59

**Rider, Loren C. '33**  
Creedin S. Paulus '60  
Jo Ann Rider Paulus '60

**Crumlich, Sylvester H. '34**  
Jean May Crumlich '37

**Hunter, F. Norman '34**  
Gary L. Hunter '60

**Myers, John R. '34**  
James G. Weber '55

**Shade, Harold S. '34**  
Mary Elizabeth Rupp Shade '34

**Williams Hunter, Isabel '34**  
Gary L. Hunter '60

**Adams, Vincent W. '35**  
Barry L. Adams '61

**Kilmore, Sr., Vance E. '35**  
Isabel Coble Kilmore '38

**May Rider, Catherine '35**  
Creedin S. Paulus '60  
Jo Ann Rider Paulus '60

**Basehore Sweger, Anna G. '36**  
Deborah M. Gunderman  
Sweger '60

**Konhaus, Sr., Paul '36**  
Helen Konhaus Rowland '39

**Landis Gelwicks, Esther '36**  
Barbara Gelwicks Neff '63  
William B. Neff '59

**Bowman, Ross G. '38**  
Linda Bowman Penny '60

**Nailor Long Mosso, Nancy '38**  
Betty B. Boyce Nailor '43  
Edwin S. Nailor '43

**Weber, Milton R. '38**  
Phyllis Wilson Weber '41

**Brubaker Yeager, Geraldine L. '39**  
Ada Joan Brubaker Ent '47  
Uzal W. (Mike) Ent '45

**Fish Collitt, Josephine '39**  
Eleanor Zimmerman Horn '39

**Myers Sourbier, Margaret '39**  
Nancy J. Sourbier Todt '70

**Schwalm Guinivan, Irene '39**  
Ruth C. Schwalm '42

**Stansfield, Charles E. '39**  
Sandra K. Stansfield Graeff '66

**Strasbaugh, Robert B. '39**  
Marjorie A. Mannix  
Strasbaugh '46

**Deily, William B. '40**  
Diane Deily Wert '67

**Gribble, Robert M. '40**  
Doris Johnson Lightner '42

**Kipp, Jr., Russell L. '40**  
Donna Dentler Kipp '60  
Richard W. Kipp '60

**Sheaffer Kurtz, Margaret Ann '40**  
James E. Kurtz '59

**Souder Yorlets, Dorothy '40**  
Kathryn Widder Fishel '40

**Stansfield, Edward E. '40**  
Howard R. (Mike) Greenawalt '70  
Laurie S. Stansfield  
Greenawalt '73

**Zimmerman, Harold E. '40**  
Doris L. White Zimmerman '43  
Steven B. Zimmerman '69

**Cramer Kipp, Marian C. '41**  
Donna Dentler Kipp '60  
Richard W. Kipp '60

**Strock, M.D., Bradford K. '41**  
Donna J. Carson Nailor '65  
Jerry L. Nailor '64

**Biddle, William E. '42**  
Helen V. Eckert Biddle '42

**Bruce, Herman P. '42**  
Jean M. Barbour Bruce '46  
Amy J. Bruce '09  
Carole Bruce

**Bruce, Herman Paul '42**  
Vance D. Zook '40

**Bushey Newton, Miriam B. K. '42**  
Kay Bushey Ashby '58

**Garman Cook, Mary '42**  
Ruth Basehore Lindner '42  
Evan G. Lindner '42

**Miller, Charles R. '42**  
Ruth Basehore Lindner '42  
Evan G. Lindner '42

**Miller, Harold E. '42**  
Beverly A. Heck Miller '65  
Harold E. (Ed) Miller '66

**Robinson, James F. '42**  
Elizabeth Robinson Unger '68

**Wagner Adams, Jean E. '42**  
Barry L. Adams '61

## HONORARIUMS

**Class of 1938**  
Paul A. Miller '38

**Class of 1940**  
*70th Anniversary of  
Graduation from MHS*  
Class of 1940  
Jean L. Keefer '40

**Class of 1941**  
Donald M. Morton '41

**Class of 1943**  
Josephine Dougherty Keiser '43

**Class of 1949**  
*60 Year Graduation*  
Helen Hershman Arnold '49  
Shirley E. McCurdy Vogelsong '49

**Class of 1950**  
Douglas G. Hoskins '50

**Class of 1951**  
Class of 1951  
Joyce Kegel Hoskins '51  
Jean A. Smeigh Adams '51  
Patricia A. Snelbaker Emel '51

**Class of 1955**  
*55th Class Reunion*  
Sue Parsell '55

**Class of 1959**  
*50th Class Reunion*  
John L. Martin  
Joanne M. Moser Hanna '59  
Sandra Snelbaker Rynard '59

**Class of 1962**  
Cynthia I. Alleman '62

**Class of 1979**  
*30th Class Reunion*  
Anna L. Baldini '79

**Class of 1980**  
John S. Boswell '80

**Shields, Charles E.**  
*Teacher/Coach/Administrator*  
Gerald B. Wood '54

**Emery Hartzell, Adele M. '39**  
Michael L. Norris '61

**Strock Kreiser, Jeanne '39**  
*Long-time friend and classmate*  
Betty P. Baker Hollinger '39

**Bricker Nunn, Ida '45**  
Annie F. Holloway Fry '45

**Malone Fox, Loretta '45**  
Annie F. Holloway Fry '45

**Mower Baumgardner, Phyllis '45**  
Annie F. Holloway Fry '45

**Mumma, Mary Alice '47**  
*Many years as Reunion  
Coordinator of Class of 1947*  
Shallimar L. Sholley Beshore '47

**Woods, Mr. & Mrs. Kenneth E. '55**  
*50th Wedding Anniversary*  
Gerald B. Wood '54

**Bushey Ashby, Kay '58**  
*57 years of friendship*  
Patricia O'Handley Robinson '58

**Bierbower, Robert "Jerry" '59**  
Barbara L. Bottomlee  
Hoffman '56

**Lutz, Robert A. '59**  
*Our Birthday - 06/05/1941 (Twins)*  
Anna L. Lutz '59

**Blauser, Gary L. '60**  
Kathleen G. Hoover Clason '40

**Blauser Casselberry, Cheryl '65**  
Kathleen G. Hoover Clason '40

**Bootay Adams, Dr. Susan J. '93**  
*Receiving her Doctorate in Industrial  
Psychology from Illinois Institute*  
Glen M. Bootay '83

**Coach Earl Hoffman, Teacher**  
Robert (Jerry) Bierbower '59

# Mash Alumni Association ONLINE

## JOIN US ONLINE TO KEEP UP WITH THE LATEST ALUMNI NEWS AND GET IN TOUCH WITH FORMER MASH CLASSMATES AND ALUMNI

- Learn what the MASH Alumni Association does
- Read biographies of Scholarship and Hall of Fame winners
- View past alumni newsletters
- Make a reservation for the annual alumni dinner
- See the current class reunion calendar
- Update your address and contact information
- Get help planning your reunion and finding lost classmates
- Make a tax-deductible donation to the Alumni Association
- Voice your opinions and keep in touch by using the online message board

Official MASH Alumni Association web site:

**WWW.MASHALUMNI.ORG**

## MESSAGE BOARD

Choose the Message Board link from the left panel on the Mash Alumni web site home page listed above. Here, you can view message topics as a guest by simply clicking on the various message board forum categories listed.

If you wish to reply to a message or start a new topic of your own, you must register. Click the Register button and provide your name, password, graduation class year, and answer the questions provided. Follow the on-screen prompts carefully as there are several security measures in place to weed out hackers and prevent other non-desirables from registering. You will be sent an email with a link which you must click to complete your online registration. Upon successful registration, you may now post replies and create new messages on the online message board.

**Bowman Williams, Eva M. '43**  
Frank B. Williams '43

**Kutz Nailor, Ada '43**  
Donna J. Carson Nailor '65  
Jerry L. Nailor '64  
Stephen L. Nailor '73

**Shearer Ritter, Gladys '43**  
George Wayne Cockley '43  
Elmer Lee Ritter '43  
Helena Wilson Jones '50

**Barbour O'Rourke, Doris '44**  
Jean M. Barbour Bruce '46

**Dixon, Robert E. '44**  
Debra Ann Dixon Norcini '69

**Fetrow, Loraine S. '44**  
Ernestine Berry Fetrow '44

**Keet, Richard S. '44**  
Donald E. Badorf '50  
Lois J. Hensel Wagner '49

**Rupp, Richard E. '44**  
Betty Staver Rupp '44

**Stephenson, Harry L. '44**  
George C. Wolfe '51

**White Engle, Doris '44**  
Robert W. Engle '42

**Williams Ramer, Anna Mary '44**  
Sally Sykes Williams '46  
Bernard J. Williams '42

**Coller Gray, Mary Lou '45**  
Richard R. Gray '45

**Grundon Guyer, Alice M. '45**  
W. Donovan Guyer '45

**Mumma, Frederick R. '45**  
Mary Alice Mumma '47

**Gerber, Carl J. (Bill) '46**  
Dorris M. Bricker Gerber '48

**Jacobs, James D. '46**  
Edward S. Armstrong '60  
M. Annan Gable Seifert '49

**Rynard, W. Donald '46**  
Foster M. Berkheimer '46  
Dolores Y. Hupper Berkheimer '51

**Stansfield Robinson, Mary '46**  
Elizabeth Robinson Unger '68

**Lau Moser, Margaret '47**  
James G. Weber '55

**Starr, Donald L. '47**  
Sara E. Starr Bardell '56

**Sultzaberger, David E. '47**  
Florence A. MacGregor  
Sultzaberger '48

**Beaston, Bernadean '48**  
Rita B. Beaston Kramer '53

**Cornman, Marlin R. '48**  
Donald L. Cornman '50  
Nancy A. Wentzel Cornman '53

**Hopple Miller, Ruth E. '48**  
R. Wayne Miller '48

**Jones Dunkleberger, Dorothy '48**  
Patricia M. Dunkleberger  
Laverla Hurley Yeager '48  
Reba Nailor McDonald '48

**Lolus, Eugene W. '48**  
John W. Appleby '78  
Barbara Lolus Appleby '78  
Bradley E. Lolus '80

**Miller, Jr., Frank B. '48**  
Ralph W. Miller '51

**Neff, J. Marlin '48**  
Irene M. Kraft Neff-Barnhart '48

**Rider Ent, Mary Jane '49**  
Ada Joan Brubaker Ent '47  
John W. Ent '48  
Uzal W. (Mike) Ent '45

**Seifert, Albert C. '49**  
M. Annan Gable Seifert '49

**Wagner, George L. '49**  
M. Annan Gable Seifert '49  
Lois J. Hensel Wagner '49  
Eva M. Wagner Hair '55

**Westbrook Cornman, Ellen M. '49**  
Creedin C. Cornman '48

**Wolf, Francis D. '49**  
Ruth E. Gelsing Wolf '49

**Barbour, Donald C. '50**  
Jean M. Barbour Bruce '46

**Brandt Walker, Marjorie '50**  
Jack E. Jordan '50

**Brown, Emory '50**  
William N. Billett '50

**Hartman Malinak, Patricia '50**  
Jack E. Jordan '50

**Kipp Cornman, Althea '50**  
Donald L. Cornman '50  
Nancy A. Wentzel Cornman '53

**Trimmer, Ray E. '50**  
Theodore R. Trimmer '47

**Becker Hamsher, Doris '51**  
Roberta A. Putt Traynor '51

**Bricker, Glen '51**  
Marlene C. Jumper Bricker '55  
Ned Woolford '53

**Emel, Victor E. '51**  
Patricia A. Snelbaker Emel '51  
George C. Wolfe '51

**Gross Spitz, Dorothy A. '51**  
Roberta A. Putt Traynor '51

**Heiges Diehl, Marilyn '51**  
Foster M. Berkheimer '46  
Dolores Y. Hupper Berkheimer '51

**Koser Snyder, Mary '51**  
Scott M. Koser '50

**Reynolds Scarce, Mildred R. '51**  
William I. Reynolds '58

**Sechrist, Donald E. '51**  
George C. Wolfe '51

**Stephenson Vancena, Beverly A. '51**  
Patricia L. McGonigal Goldhart '51

**Williams Deckman, Joan '51**  
Sally Sykes Williams '46  
Bernard J. Williams '42

**Bender, M. Lionel '52**  
Douglas J. Bender  
Winifred J. Bender '53  
Nancy C. Roth Hanlon '53

**Diehl Bonfe, Barbara '52**  
Ann Stone McClelland '52

**Tanger Stephens, Doris J. '52**  
William I. Reynolds '58

**Zimmerman Stone, Marjorie '52**  
John P. Wolfe '53  
Janet Zimmerman Wolfe '53

**Donovan, Bruce C. '53**  
Don A. Bair '53  
Lucy Sheaffer Bair '55

**Mackey, Jr., John N. '55**  
Linda Mohler Humes '55  
Ned Woolford '53

**McCarty Thompson, Carol '55**  
Ken C. Strong '55

**Quigley, Jack E. '55**  
Linda Mohler Humes '55  
Thomas J. Simpson '55

**Wilbur, Robert E. '55**  
Shirley Wilbur D'Orazio '53

**Brandt, Elizabeth C. '56**  
C. Richard Brandt '59

**Getz, Karl R. '57**  
Janice D. Anderson Bates '61  
Richard E. Bates '57

**Humes, Ronald '58**  
Nancy L. Kapp Alleman '63

**Neff Kelley, Augusta '58**  
Kenneth R. Neff '60

**Neff Zeunert, Beatrice '59**  
Kenneth R. Neff '60

**Simon, Jr., Kenneth A. '60**  
James W. Sauve '60  
Judith A. Trimble Sauve '62

**Kapp, Frederick R. (Bob) '62**  
Carol Kapp Rider '60  
Nancy L. Kapp Alleman '63

**Fortney, James A. '63**  
Marian Jacoby Fortney '28

**Harne Wise, Brenda '63**  
Fay K. Geegee '64  
Glenda G. Geegee '59  
Barbara L. Harne Lowe '61

**Morris, Jr., William A. '63**  
John B. Carmany '63

**Sauve, Stephen C. '63**  
Carol Kertiss Haley '62

**Updegrove, John Thomas '63**  
Ruth Basehore Lindner '42  
Evan G. Lindner '42

**Heckard, Ross "Skip" '65**  
Ward A. Bower '65

**Stafanon, Josef '66**  
Tania Ramalho '64

**Kearney, Fred '67**  
David R. Griswold '67  
Kelley Hanlon Griswold '67  
Paul A. Meck '67

**Hershner Blatner, Jan '68**  
Patricia (Tita) Hershner Eberly '59

**Stansfield, Lynne '70**  
Howard R. (Mike) Greenawalt '70  
Laurie S. Stansfield Greenawalt '73

**Brandt, Stephen K. '71**  
Robert E. Brandt '46

**Gable, Kim A. '72**  
M. Annan Gable Seifert '49  
Lois J. Hensel Wagner '49

**Rider, Michael D. '77**  
Donald E. Badorf '50  
E. Randall (Randy) Kinsey '78

**Zeigler, Edwin D. '77**  
Mary Beth Zeigler '74

**Sealover, Jeffrey D. '80**  
A. Benjamin Calhoun '80

**Scott Kerstetter, Jenny '91**  
Robert J. Mentzer '86

**Stada, Christine M. '96**  
Michele L. Seifert Kreitman '94

**Wolfe, Ian M. '03**  
Keith A. Quinlan '92  
Megan E. Thomas Quinlan '96  
Margaret Waardenburg Wolfe '78  
Austin W. Wolfe '04  
John P. Wolfe '77  
John Paul Wolfe III '07

# 2009 THE WILDCAT FOUNDATION



## 2010 Wildcat Foundation Grants

Program/Event	Grant Amount
Step Up to MMS Camp**	\$500
Honor Bus**	\$750
MLK Day**	\$1,631
MASH Student Council**	\$250
Environment Center Fenced Garden**	\$931
MMS Social Studies**	\$1,000
Renaissance Award**	\$200
Gay Straight Alliance Club**	\$1,000
Diversity Club**	\$1,800
Technology Student Association**	\$2,000
CPR 6th Grade*	\$426
Wellness Grades 3, 5, 7 & Community*	\$3,600
Operation Wildcat*	\$1,490
England Exchange*	\$1,000
Adopt a Neighborhood**	\$500
MMS Life Skills Social Club**	\$569
Student Aid Fund Grades 6-12***	\$1,000
Percussion Ensemble**	\$2,500
Instrumental Summer Music Program**	\$1,250
Senior Musical & Dinner**	\$2,532
Upper Allen Kiwanis Music in the Park**	\$2,500
Elementary Visiting Author**	\$2,450
Kindergarten Academy Literacy Night**	\$560
MASD Art Department**	\$1,000
Elementary Family Arts Night**	\$700
MASH Torch**	\$500
MASH Literary & Arts Magazine Club**	\$350
3rd Grade Dictionary Project**	\$525
MASH Lacrosse *	\$606
MASH Cheerleading***	\$300
MASH Water Polo ***	\$500
Mechanicsburg Swim Club***	\$1,080
<b>Total Funded</b>	<b>\$36,000</b>

\* PROGRAMS FUNDED THROUGH DESIGNATED & UNDESIGNATED FUNDS.

\*\* PROGRAM DONORS HAVE DESIGNATED THEIR FUNDS TO SPECIFIC AREAS OF INTEREST.

\*\*\* PROGRAM FUNDED THROUGH UNDESIGNATED FUNDS.

## Current Events

### Fall Festival 2009

Many families took advantage of the autumn foliage, food and fun at the Eighth Annual Wildcat Foundation Fall Festival held on Sunday afternoon, October 4. The community event at the Trails and Trees Environmental Center featured games, amusements, and many other activities, foods, and attractions planned by local booster clubs, school PTOs and community organizations. Activities included a blood drive, cake walk, duck pond, face painting, pumpkin decorating, sand art, guitar hero contest, DDR, scarecrow assembly, and yard, bake, and used books sales.

Under the guidance of club advisor Mr. Ryan Hartman, MASH Key Club members volunteered and provided extra help in the food tent as well as set up and clean up of the environmental center.

One of the most "chilling" activities was the dunk tank run by MMS Student Council. It was a typical autumn afternoon with plenty of sun but a tad chilly and windy; however, that didn't hamper the efforts of the staff from MMS who volunteered to risk being "tanked" by those willing to pay for the honor of dunking a teacher or administrator.

The fall festival was a great success, and it raised more than \$6,000 for the Wildcat Foundation. The funds will help support the Wildcat Foundation and the programs it sponsors throughout the year.

### Board Members

During the past year, the Wildcat Foundation welcomed the following members of the community to the board of directors:

Ercol Acri, DC; Donald Burgard, CPA (MASH '82); Robert Russoli; Jefferson Shipman, Esq. (MASH '80); Jeanne Souder (MASH '64); Linda Willis (MASH '67). We thank them for volunteering to serve on the board of directors and for their support of the mission of the Wildcat Foundation.

In February, we bid farewell to three board members whose terms had expired. They are: Jim Cochran, Donna Schankweiler and Pete Ramsey. Each outgoing board member was presented with a certificate of appreciation for their time and devotion to the Wildcat Foundation and to MASD.

### Alumni Association Check Presentation

At the homecoming football game on Friday, October 9, Mechanicsburg Area High School Alumni Association (MAH-SAA) President Myra Badorf and Treasurer Ed Miller presented a check for \$10,055 to Wildcat Foundation President Ranny Singiser and board members. The Wildcat Foundation appreciates the ongoing support of MAHSAA and thanks them for their contributions to the Capital Campaign.

### Senior Musical & Dinner

A grant from the Wildcat Foundation made possible by a generous donation from Fry Communications provided a special presentation of the Wildcat Production's *The Music Man*. In March, senior citizens from Messiah Village, Mechanicsburg Senior Center, Bethany Village and other retirement centers in the surrounding communities were invited to an afternoon performance of *The Music Man* at MASH. More than 200 seniors attended the musi-

cal followed by a turkey dinner with all the trimmings in the high school cafeteria. The meal was prepared and served by MASD Food Service staff. During dinner, the guests were given an opportunity to socialize and interact with the musical's actors, musicians, and production crew. The Wildcat Foundation is grateful for the generosity and continued support of Fry Communications.

### Proposed Environmental Classroom

The mission of the Trails and Trees Environmental Center is to enhance environmental stewardship through curriculum support, recreation programs and community partnerships.

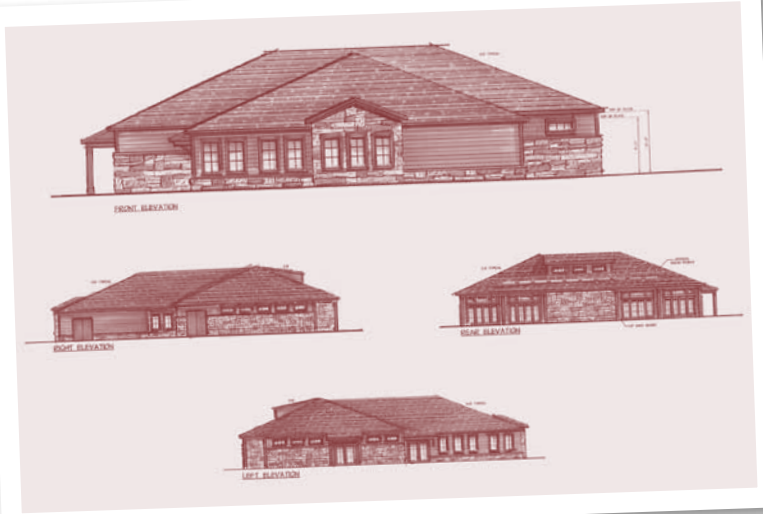
To promote the mission of the Environmental Center, the Wildcat Foundation and MASD have combined resources (or partnered) to undertake an educational classroom space at the Trails and Trees Environmental Center. The proposed building will contain two flexible classroom spaces, an office suite and storage. The one-story wood construction will be 5,434 square feet and accommodate 60 students.

Currently the Trails and Trees Environmental Center is directly behind the existing middle school and consists of a series of trails, fields, a pavilion building and existing farm house converted for education.

While the existing facility is used heavily by MASD, because there is no indoor heated space, the Environmental Center is not used heavily during the winter months. The new building will allow increased usefulness of the facility.



Residents from Bethany Village included (left to right): Dorothy Mahone, Jean Bruce (MASH '46) and Patricia Dundore



Groundbreaking is expected in the spring and the completion of the building is anticipated some time in early fall 2010.

Thank you to Crabtree Rohrbaugh & Associates who volunteered their design services; Fischbach Morgan & Associates who provided engineering and landscape architectural services; Upper Allen Township Commissioners and Planning Commission for approving this project; and Don Farinelli for volunteering to be project manager.

Curriculum at the new classroom will include geology, tree identification, astronomy, soil science and composting. Recreation programs may involve bird watchers/raptors, team building and challenge course, orienteering and organic farming. Community partnerships will embrace service projects, internships, environmental day, and connect with federal and country green organizations.

If your business is interested in donating materials or services for the Environmental Classroom, please contact the Wildcat Foundation office at 691-4505.

### Donations to the Wildcat Foundation

There are many ways to support the Foundation. Your tax-deductible gift to the Foundation would support educational, community or athletic-related

programs. You can also include the Foundation in your estate plan. If your company participates in the annual United Way Campaign, you can designate your contribution to the Wildcat Foundation through United Way Capital Region. (Please specify designation code 180421.)

The Wildcat Foundation, a 501(c)(3) foundation, has been approved as a local educational foundation eligible to receive contributions from businesses interested in receiving tax credits for their contributions. The Educational Improvement Tax Credit Program (EITC) is available to businesses that are subject to several different types of tax. Please see our website to see if you are eligible.

The Wildcat Foundation currently has two approved projects: the Trails and Trees Environmental site and the Television and Film Production Studio. EITC funds can be designated for either project.

Finally, you can volunteer your time to the Foundation by serving on a committee or offering your professional expertise. If you would like to volunteer or if you are interested in learning more about the Wildcat Foundation please visit our website: [www.wildcatfoundation.org](http://www.wildcatfoundation.org) or contact Carole Bruce at 691-4505 or email [cbuce@mbgsd.org](mailto:cbuce@mbgsd.org).

## CONTRIBUTORS

- |                                  |                                   |                                   |
|----------------------------------|-----------------------------------|-----------------------------------|
| Barry L. Adams '61               | Norma Foster Weber '43            | Donald O. Rankin '60              |
| David B. Adams '61               | Robert E. Fry '59                 | Robert E. Reynolds '47            |
| Sherri L. Akens Albertson '85    | Fay K. Geegee '64                 | William I. Reynolds '58           |
| Charles S. Alexander '50         | Charles W. Gelsinger '55          | Tracey L. Rice Mitchell '78       |
| Irvin Alexander '54              | Carrol G. Gill Wrightstone '57    | Jack C. Ritter '54                |
| Janice D. Anderson Bates '61     | Betty R. Goodhart Sowers '40      | Barbara A. Rodenhiser Bell '50    |
| Nancy Appel Scott '78            | Sara S. Hall Snyder '71           | Samuel D. Rupp '90                |
| Betty Badorf Warren '52          | Kenneth L. Hammaker '66           | James W. Sauve '60                |
| Donald E. Badorf '50             | Barbara L. Harne Lowe '61         | Michele L. Seifert Kreitman '94   |
| Ann R. Bair Olberg '54           | Betsy Heagy Smith Murray '43      | Nancy Shafran Wingert '56         |
| Don A. Bair '53                  | John E. Heath '53                 | Jeffrey G. Shatzer '81            |
| Farley S. Baker '76              | Beverly A. Heck Miller '65        | Lucy Sheaffer Bair '55            |
| Fred E. Basehore '48             | Dawson E. Heck '59                | Florence S. Sheely Martin '46     |
| Benjamin D. Basom '95            | Grace D. Heck Brannan '61         | Jacob C. Sheely '43               |
| Richard E. Bates '57             | Kathleen G. Hoover Clason '40     | Michael S. Signor '84             |
| Winifred J. Bender '53           | Marilyn Horn Kachelries '57       | Charles R. Slaybaugh '58          |
| William N. Billett '50           | Gladys Hoy Peck '47               | Patricia A. Snelbaker Emel '51    |
| W. Craig Bitner '58              | Brian Jamiolkowski '91            | Lee C. Stare '55                  |
| William E. Bitner '55            | Joan Johnson Stokes '57           | Lavina Starner Wagner '63         |
| Patricia A. Bixler Myers '59     | Jack E. Jordan '50                | Gail A. Stiffler Parthree '61     |
| George W. Black '46              | Marlene C. Jumper Bricker '55     | Rickie J. Stone Cook '63          |
| John S. Boswell '80              | H. Scott Kane '59                 | Sally Sykes Williams '46          |
| Ward A. Bower '65                | Rose Ann Kimmel Whitesell '64     | Mary Thomas Myers '68             |
| Robert E. Brandt '46             | E. Randall Kinsey '78             | Judith A. Trimble Sauve '62       |
| Dorris M. Bricker Gerber '48     | Richard W. Kipp '60               | Forrest A. Trumbore '44           |
| Jessica L. Brillhart '90         | Betty K. Klinger Hooven '50       | Reily Eugene Urich '47            |
| Roy (Tony) Brown '72             | Ronald J. Knisley '57             | Edward J. Vogelsong '39           |
| Ada Joan Brubaker Ent '47        | Earl E. Kohlhaas '56              | John P. Voris '58                 |
| Lloyd W. Bucher '54              | Irene M. Kraft Neff-Barnhart '48  | Janice W. Waardenburg Shatzer '83 |
| Clarence Burley '40              | Robert W. Kraly '38               | Sara Wagner Flagg '51             |
| Louise Carbaugh VanDinter '47    | David K. Kurtz '63                | Michelle L. Wallander '97         |
| Eleanor G. Carmany Burkhardt '67 | Josephine Lichty Clay '51         | Robert A. Warren '52              |
| John B. Carmany '63              | Janet Little Wise '51             | Althea L. Weber Kessler '45       |
| Donald L. Cassel '52             | Bradley E. Lolus '80              | Virginia Weber Gelsinger '55      |
| Isabel Coble Kilmore '38         | Robert A. Lutz '59                | Bernard J. Williams '42           |
| Erin L. Cochran Crispin '98      | Marjorie A. Mannix Strasbaugh '46 | Claude M. Williams '48            |
| George Wayne Cockley '43         | C. Ray Martin '41                 | David C. Wise '81                 |
| Robert D. Cook '63               | Linda M. Martin Verharst '61      | Mary Anne Wise Parrett '78        |
| Creedin C. Cornman '48           | Velma M. McCurdy Mumper '42       | Robert C. Wise '51                |
| James D. Cotterman '74           | Stephen C. Mefferd '65            | George C. Wolfe '51               |
| Russell E. Daniels '84           | Harold E. (Ed) Miller '66         | Gerald B. Wood '54                |
| Donald M. Darr '57               | Marilyn Miller Ginsburg '63       | Ned Woolford '53                  |
| Diane Deitrich Voris '58         | Amy S. Montwicki '91              | Bradley B. Wright '53             |
| Donna Dentler Kipp '60           | Donald L. Mowery '55              | Alice Zimmerman Creager '41       |
| James W. Dougherty '54           | William F. Mumma '53              |                                   |
| Josephine Dougherty Keiser '43   | Martin L. Myers '55               |                                   |
| Winifred Dougherty Swick '39     | Marjorie L. Nace Gurba '62        |                                   |
| Sarah Drury Cotton '60           | Joyce E. Nailor Bucher '56        |                                   |
| Judy K. Dull Balthaser '65       | Reba Nailor McDonald '48          |                                   |
| Wendy S. Eberly '79              | Stephen L. Nailor '73             |                                   |
| Robert E. Enck '54               | W. Michael Nailor '72             |                                   |
| Ronald G. Enck '52               | Kenneth R. Neff '60               |                                   |
| Robert W. Engle '42              | William F. Olberg '59             |                                   |
| Uzal W. (Mike) Ent '45           | Patricia K. Orris Robertson '62   |                                   |
| Ronald G. Folks '59              | Barbara Otto Monighan '66         |                                   |
| Delvin E. Forry '44              | Brenda J. Owen Goddard '61        |                                   |
| Rebecca J. Forry '73             | Jonathan R. Page '64              |                                   |

We would like to thank all the Alumni for their support to the Wildcat Foundation. Please visit our website at [www.wildcatfoundation.org](http://www.wildcatfoundation.org).

# FINANCIALS

STATEMENT OF CASH RECEIPTS AND CASH DISBURSEMENTS  
AND CHANGES IN FUND BALANCE ADMINISTRATIVE FUND  
AND SUPPLEMENTARY INFORMATION FOR YEARS INDICATED

	2009	2008
<b>RECEIPTS</b>		
Memberships (564/604)	\$5,640.00	\$6,040.00
<b>CONTRIBUTIONS</b>		
Scholarship Fund	15,370.00	44,720.00
Administrative Fund	5,276.00	5,416.00
Wildcat Foundation	8,750.00	15,172.00
Annual meeting	5,790.00	6,030.00
Homecoming	1,934.50	2,600.00
	<b>45,280.50</b>	<b>79,978.00</b>
<b>DISBURSEMENTS</b>		
Post office box rental	42.00	40.00
Bulk mail postage (12775/12530)	2,018.66	1,739.48
Return mail postage (420/621)	250.31	345.54
Printing newsletter (\$ 7,382.09 - \$1,253.00)	6,129.09	7,738.02
Annual meeting	5,985.25	6,569.83
Homecoming	1,395.19	1,922.06
Database & website mgmt. fee	3,000.00	3,000.00
Supplies	154.82	505.79
Letterheads & envelopes	384.78	227.90
Plaques	170.25	243.75
Transfer funds to FEC	13,305.00	44,550.00
Transfer funds to Wildcat Foundation	10,055.00	14,822.00
	<b>42,890.35</b>	<b>81,664.37</b>
Receipts over (under) disbursements	2,390.15	(1,686.37)
Fund balance, January 1	19,277.57	20,963.94
Fund balance, December 31	<b>\$21,667.72</b>	<b>\$19,277.57</b>
<b>ADMINISTRATIVE FUND OWES/(OVERPAID)</b>		
Scholarship Fund	\$3,260.00	\$1,195.00
Wildcat Foundation	(510.00)	795.00
	<b>\$2,750.00</b>	<b>\$1,990.00</b>
<b>SCHOLARSHIP FUND</b>		
Market value	\$380,689.00	\$302,941.00
Contributions to date, approximate	513,310.00	497,940.00
Income available	18,145.00	20,717.00
Scholarships paid	20,700.00	26,000.00

## PLANNING A CLASS REUNION?

The Association receives updates on alumni on a regular basis. These updates are gathered from this mailing, the grads themselves and from friends and relatives. If you are planning a reunion, please contact the Alumni Assoc. as you begin your plans. We will provide the most current list of your class members, including their addresses and phone numbers, and mailing labels upon request.

# Awards

## 2009 SCHOLARSHIP AWARDS

2010 Scholarship Award Winners not chosen prior to publication of newsletter.



### MAXWELL ALEMAN

Max was involved in symphonic band, marching band, orchestra, chorus, Wildcat Singers and the musical. He was a member of National Honor Society, National Spanish Honor Society, National Music (Tri-M) Honor Society, Physics Club, Spanish Club and Literary Club. Max also received Distinguished Honors for his Graduation Project as well as an Academic Letter. Max will attend Ithaca College and major in music.



### CAMILLA KEENAN-KOCH

Camilla participated in Environmental Club, Literary Magazine Club Math Club, Physics Club, Model United Nations, and Quiz Bowl. She was a member of National Honor Society and National German Honor Society. Camilla won Scholastic Gold & Silver Key Awards and served as Junior Councilperson for the Borough of Mechanicsburg. Camilla will attend University of Chicago.



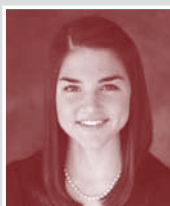
### SHELBY CASSELL

Shelby participated in orchestra, softball and volleyball. She was a member of National Honor Society, National Spanish Honor Society, and Physics Club. Shelby will attend Juniata College and major in biology.



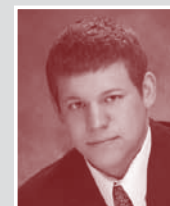
### KENDRA PARKER-PITTS

Kendra was active in chorus, Environmental Club, Fall Play, Math Club, Memory Team, Musical, Wildcat Singers, Prom Committee, and Physics Club. She was a member of National Honor Society, National German Honor Society, and National Music (Tri-M) Honor Society. Kendra will attend the University of Pittsburgh and major in Biology/Pre-Medicine.



### CHRISTINE JOHNSON

Christine was active in Chorus, DECA Business Club, and the spring musical. She will attend Johnson & Wales University to major in Business.



### RYAN MENTZER – LINEMAN OF THE YEAR

Ryan was active in football and baseball and was awarded the Lineman of the Year Scholarship. He was a participant in Lift for Life and was a member of National Honor Society, National Spanish Honor Society, Key Club and Physics Club. Ryan also received an Academic Letter. Ryan will attend the University of Maryland and major in Finance.

# MEMBERSHIP DUES & ANNUAL MEETING RESERVATIONS



## CONTACT INFORMATION

YOUR NAME *(Include maiden name when appropriate)*

CLASS

ADDRESS

CITY

STATE

ZIP

PHONE

E-MAIL

1. **Membership Dues** # \_\_\_\_\_ @ \$10.00 = \$ \_\_\_\_\_

2. **Dinner Reservations** # \_\_\_\_\_ @ \$30.00 = \$ \_\_\_\_\_

*(List the names and dinner choices of attendees below)*

RESERVE A TABLE: TABLES OF 8-10 MAY BE RESERVED – WE WILL TRY TO SEAT MEMBERS OF SIMILAR CLASSES TOGETHER.

NAME, CLASS *(Include maiden name where appropriate)*

MEAL CHOICE *(Please check one for each dinner attendee)*

	<input type="checkbox"/> CHICKEN MARSALA <input type="checkbox"/> STUFFED PORK CHOP
	<input type="checkbox"/> CHICKEN MARSALA <input type="checkbox"/> STUFFED PORK CHOP
	<input type="checkbox"/> CHICKEN MARSALA <input type="checkbox"/> STUFFED PORK CHOP
	<input type="checkbox"/> CHICKEN MARSALA <input type="checkbox"/> STUFFED PORK CHOP
	<input type="checkbox"/> CHICKEN MARSALA <input type="checkbox"/> STUFFED PORK CHOP
	<input type="checkbox"/> CHICKEN MARSALA <input type="checkbox"/> STUFFED PORK CHOP
	<input type="checkbox"/> CHICKEN MARSALA <input type="checkbox"/> STUFFED PORK CHOP
	<input type="checkbox"/> CHICKEN MARSALA <input type="checkbox"/> STUFFED PORK CHOP
	<input type="checkbox"/> CHICKEN MARSALA <input type="checkbox"/> STUFFED PORK CHOP
	<input type="checkbox"/> CHICKEN MARSALA <input type="checkbox"/> STUFFED PORK CHOP

SPECIAL MEAL NEEDS \_\_\_\_\_

*(PLEASE BE SPECIFIC, INCLUDING ALLERGIES TO NUTS OR OTHER FOODS)*

3. **Administrative Fund** \$ \_\_\_\_\_

4. **Scholarship Fund** \$ \_\_\_\_\_

This donation is in  honor of  memory of

NAME \_\_\_\_\_ CLASS YEAR \_\_\_\_\_

On the occasion of \_\_\_\_\_  
*(Birthday, Anniversary, Class Reunion, etc.)*

Please notify the following of this contribution:

NAME \_\_\_\_\_

ADDRESS \_\_\_\_\_

CITY \_\_\_\_\_ STATE \_\_\_\_\_ ZIP \_\_\_\_\_

5. **The Wildcat Foundation** \$ \_\_\_\_\_

6. **TOTAL ENCLOSED** \$ \_\_\_\_\_

*(Dues and contributions are tax deductible. Checks payable to: MAHSAA)*

### Return Form to:

Marty Coover  
 22 E. Maplewood Ave.  
 Mechanicsburg PA 17055

# The Annual MROAR

## ALUMNI ASSOCIATION BOARD OF DIRECTORS

*President* Myra Badorf, '78

*Vice-President* Alan VanDrew, '76

*Treasurer* Ed Miller, '66

*Secretary* Robert Cook, '63

*Immediate Past Pres.* Eric Hollinger, '71

Cynthia I. Alleman, '62

Martin L. Coover, '56

Tita Hershner Eberly, '59

Patricia Snelbaker Emel, '51

Stephen P. Fish, '70

Barry Heckard, '66

Lisa Runkle Hoover, '88

Bob Mentzer, '86

Jerry Nailor, '64

Scott Schminky, '77

Robert Shambaugh, '69

Robert Strickler, '94

Andrea Turo Teeter, '78

Foster M. Berkheimer, Emeritus '46

## NEWSLETTER

### EDITORS

Tita Hershner Eberly, '59

Bob Mentzer, '86

### DESIGN/PRODUCTION

Debbie Bates-Schrott, '87

*Bates Creative Group*

### CONTRIBUTORS

Cynthia I. Alleman, '62

Myra Badorf, '78

Carole Bruce

Martin L. Coover, '56

Dianne McGowan

Bob Mentzer, '86

William J. Murray

Gabrielle Hull Prichett, '84

Alan Vandrew, '76

Carol Winston

*Photography by Mark Kearns, '84,*

*and Dianne McGowan*

## From the Archives...

*by William J. Murray*

OF THE MECHANICSBURG AREA SCHOOL DISTRICT



### THE HIGH SCHOOL YEARBOOK

The first Mechanicsburg High School Yearbook was published in 1920 and until 1929 was called *The Torch*. The yearbook underwent a number of name changes including *The Artisan* (1930, 1931), *Le Memoire* (1932), *Bon Voyage* (1933), *Sands* (1934) and *The Pirate* (1935). *The Artisan* was adopted as the permanent name of the high school's annual in 1936. The Mechanicsburg District Archives has an incomplete collection of yearbooks.

THE MECHANICSBURG SCHOOL DISTRICT ARCHIVES IS LOCATED ON THE SECOND FLOOR OF THE ELMWOOD BUILDING. THE COLLECTION IS AVAILABLE TO PROFESSIONAL HISTORIANS, STUDENTS OF HISTORY, AND THOSE INDIVIDUALS INTERESTED IN THE LEGACY OF THE SCHOOL DISTRICT AND THE ROLE THAT PUBLIC EDUCATION HAS PLAYED IN THE COMMUNITY. ANYONE WISHING TO CONDUCT RESEARCH SHOULD CALL 717.691.4500 TO MAKE AN APPOINTMENT.

Call (717) 766-5628 or email [info@mashalumni.org](mailto:info@mashalumni.org)

If not, please let us know ASAP!

IS YOUR MAILING LABEL CORRECT?

*Tickets available from  
Board Members in September*

AND A REAL HOMECOMING!  
Alums for a fun evening...

Join your friends and Mechanicsburg

\$10 per person

The Mechanicsburg Club

5 pm - 12 Midnight

Friday, October 22nd

HOMECOMING GAME GATHERING BEFORE, DURING & AFTER THE GAME

## Mark Your Calendar For a Fun Wildcat Evening!

*RETURN SERVICE REQUESTED*

P.O. Box 312 • Mechanicsburg, Pennsylvania 17055

MECHANICSBURG AREA HIGH SCHOOL  
ALUMNI ASSOCIATION

NON-PROFIT  
ORGANIZATION  
U.S. POSTAGE  
**PAID**  
PERMIT NO. 356  
YORK, PA